

# VI Logger User Guide

## Version 2.0

VI Logger provides you with the necessary software tools to define and execute datalogging tasks. With VI Logger, you can view real-time data in graphs, browse and manage historical data in graphs, and export data to view in Web browsers and other applications. You can control datalogging tasks in LabVIEW and use LabVIEW to analyze historical data.

This user guide addresses concepts and procedures for the Lite and Full packages of VI Logger. The Lite package of VI Logger provides basic datalogging and acquisition tools for NI-DAQmx devices. The Full package of VI Logger includes additional features for NI-DAQmx, Traditional NI-DAQ, and FieldPoint devices. You can complete the procedures in this user guide with either package of VI Logger. Refer to the [Purchasing the Full Package of VI Logger](#) section for more information about features in the Full package.

## Contents

---

Upgrading from Version 1.1 .....	2
System Requirements.....	2
Activating the Full Package of VI Logger .....	3
Getting Started with VI Logger .....	3
Creating a VI Logger Task for NI-DAQmx .....	3
Setting up Channels to Acquire and Log Data .....	6
Running a Task .....	7
Modifying a Task.....	7
Duplicating a Task .....	7
Deleting a Task and its Data .....	8
Setting Data Acquisition and Logging Conditions .....	8
Setting Start and Stop Conditions for Data Acquisition .....	8
Setting Start Conditions for Datalogging.....	9
Viewing and Printing Data.....	10
Viewing Data during Acquisition and Logging.....	10
Viewing Data from Previous Task Runs .....	10
Viewing Data in VI Logger Graphs.....	12
Viewing Data in Other Applications .....	13
Printing Data .....	14

Using LabVIEW with VI Logger .....	14
Generating Example VIs from VI Logger Tasks .....	14
Purchasing the Full Package of VI Logger.....	15
Where to Go from Here .....	16

## Upgrading from Version 1.1

---

VI Logger version 2.0 contains the following changes from VI Logger version 1.1:

- You can use VI Logger with NI-DAQmx devices.
- You can use the Lite package of VI Logger only with NI-DAQmx devices.
- You must activate the Full package of VI Logger if you want to use all the features available in VI Logger.
- If you are using VI Logger with NI-DAQmx devices, you can use a simplified user interface instead of the Measurement & Automation Explorer (MAX).
- You can generate example VIs in LabVIEW from VI Logger tasks. You must have LabVIEW 7.1 or later to view and run these example VIs. Refer to the [Generating Example VIs from VI Logger Tasks](#) section for more information about running tasks within LabVIEW.
- You can view VI Logger data in Microsoft Excel.
- You can use the VI Logger Get Channel Attributes VI on the **VI Logger Advanced** palette to retrieve channel name, physical unit, and scaling maximum and minimum attributes for logged channels.
- You can save task data in remote databases. In the Full package, you can associate a database with a particular task.
- If you want to run VI Logger tasks in LabVIEW, you must use LabVIEW 7.1 or later.

## System Requirements

---

VI Logger has the following system requirements:

- Windows 2000/XP.
- A minimum of a Pentium III or later or Celeron 600 MHz or equivalent processor, but National Instruments recommends a Pentium 4 or equivalent processor.
- A minimum of 256 MB of RAM and a screen resolution of 800 × 600 pixels. National Instruments recommends 512 MB of RAM and a screen resolution of 1,024 × 768 pixels.

- At least 200 MB of disk space for the VI Logger installation. Additional disk space for datalogging and storage depends on the speed and quantity of datalogging.
- To use *VI Logger Help*, the MAX interactive help system, and the NI Example Finder, you must have Microsoft Internet Explorer 5.0 or later.
- To use the Lite package, an NI-DAQmx device and NI-DAQmx software.
- To use the Full package, an NI-DAQmx device and NI-DAQmx software, or a Traditional NI-DAQ device and DAQ 7.0 or later, or a FieldPoint I/O module and FieldPoint 4.0 or later.
- To use the Full package, you must purchase VI Logger 2.0, obtain a serial number, and activate the software.

Refer to the National Instruments Web site at [ni.com](http://ni.com) for the most current information about NI hardware devices that VI Logger supports.

## Activating the Full Package of VI Logger

---

Refer to the *Activation Instructions for National Instruments Software* for more information about activating the Full package of VI Logger after you install it. The instructions are included with the Full package as a printed document and with the Full and Lite packages as a PDF on the VI Logger CD.

## Getting Started with VI Logger

---

This user guide provides a step-by-step introduction through the process of creating, configuring, and running a VI Logger task with an NI-DAQmx device.

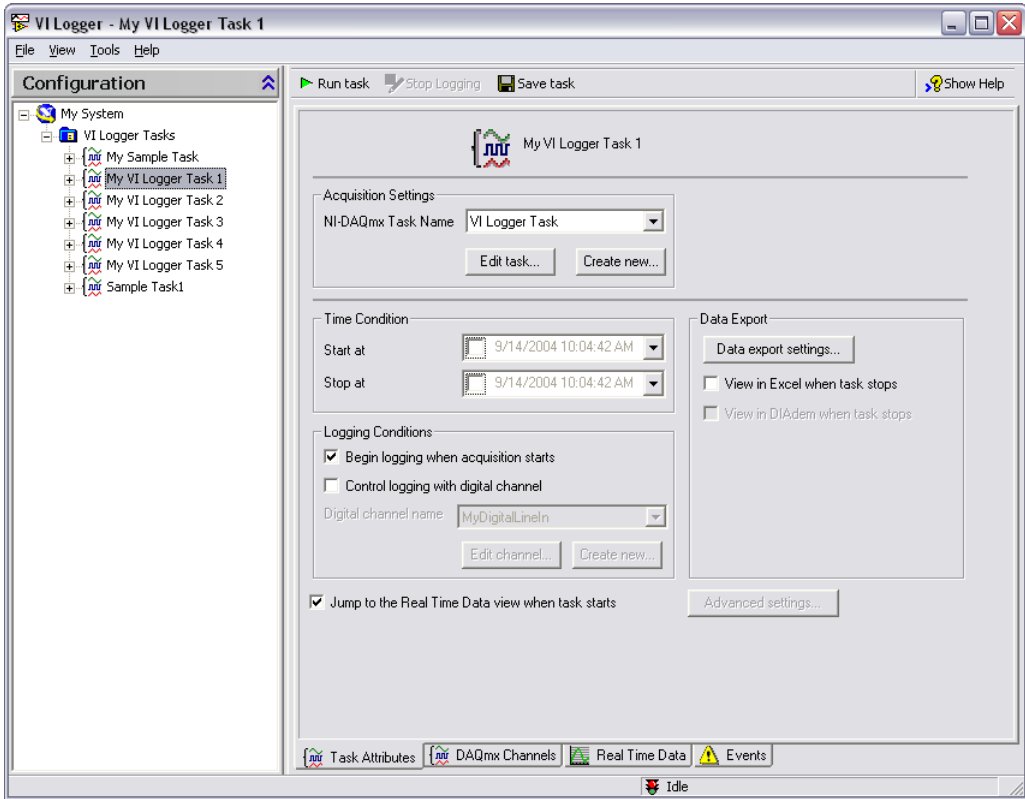
Refer to the *VI Logger Help* for more information about creating and running a VI Logger task on a Traditional NI-DAQ or FieldPoint device.

## Creating a VI Logger Task for NI-DAQmx

VI Logger uses configurable tasks for datalogging and acquisition. You can create, customize, and save multiple tasks. When you use VI Logger with an NI-DAQmx device, you can work either in a simplified user interface or within MAX.

Complete the following steps to create a VI Logger task in the simplified user interface.

1. From the **Start** menu, select **Programs»National Instruments»VI Logger»VI Logger (NI-DAQmx)** to launch VI Logger.
2. In the configuration tree, right-click **VI Logger Tasks** and select **Create New** to display the **Create New** dialog box.
3. Select **Using NI-DAQmx** and click the **Finish** button. A new VI Logger task named **My VI Logger Task 1** appears in the configuration tree and its settings display in the Task Attributes view of the VI Logger window, as shown in the following example.

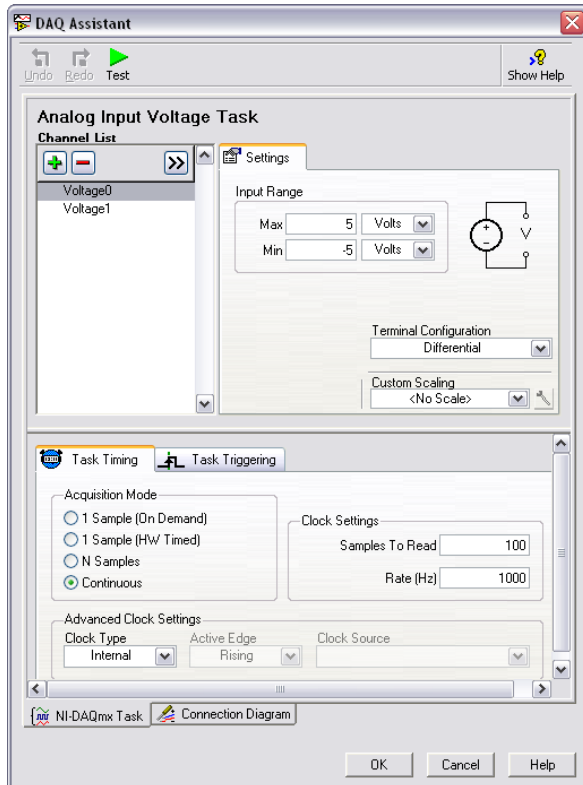


4. Right-click the task name in the configuration tree and select **Rename task** from the shortcut menu. Enter the task name you want to use.
5. In the **Acquisition Settings** section, click the **Create new** button to create an NI-DAQmx task. The DAQ Assistant launches and guides you through the following steps to create and configure an NI-DAQmx task.
  - a. Click the **Analog Input** option to display analog input types. Click a measurement type, such as Voltage, to select it.



**Note** You can use only analog input tasks with VI Logger.

- b. Select the channels to scan for data. Press the <Ctrl> key and click channel names to select multiple channels. After you select the channels you want, click the **Next** button.
- c. Enter a name for the NI-DAQmx task.
- d. Click the **Finish** button. The DAQ Assistant displays task settings that you can configure, as shown in the following example.



- e. From the **Task Timing** tab, click the **Continuous** radio button to select a continuous acquisition mode. This configures the NI-DAQmx task so you can stop a VI Logger task manually.
- f. Click the **Test** button at the top of the window to ensure that the NI-DAQmx task settings are valid and work the way you want.
- g. Click the **OK** button to close the DAQ Assistant.

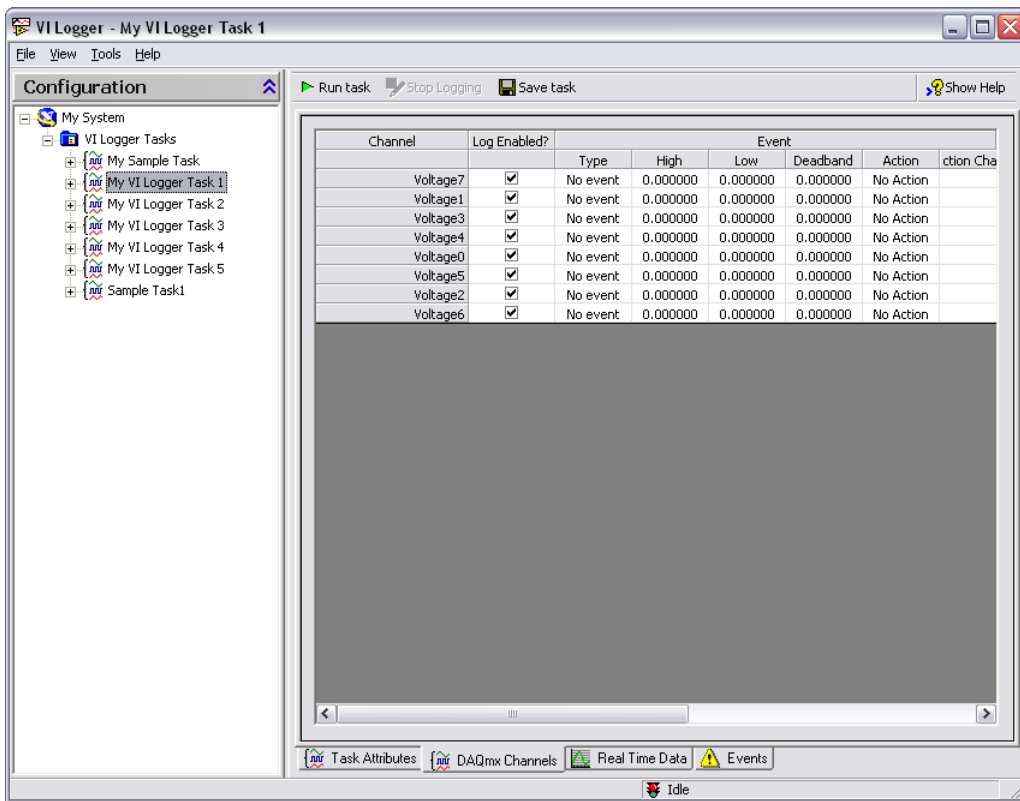
From the Task Attributes view, you can click the **Edit task** button if you want to edit the NI-DAQmx task settings. For example, if you determine that a VI Logger task is acquiring data too quickly, you can edit the NI-DAQmx task settings to adjust the scan rate.

# Setting up Channels to Acquire and Log Data

For each VI Logger task you configure, you can select which specific channels acquire and log data within that task.

Complete the following steps to set up the channels that acquire and log data.

1. Click the **DAQmx Channels** tab of the VI Logger window to display the DAQmx Channels view, as shown in the following example.



2. The **Channel** column displays the channels you created in the DAQ Assistant for the NI-DAQmx device. To enable logging for each channel, place a checkmark in the **Log Enabled?** checkbox in the column next to each channel name. If a checkbox does not contain a checkmark, VI Logger scans the channel but does not log the data.
3. Click the **Save task** button to save the channel settings in the VI Logger task.



**Tip** Use the DAQ Assistant to add or delete channels. From the **Task Attributes** tab, click the **Edit Task** button to open the DAQ Assistant.

# Running a Task

Complete the following steps to run a VI Logger task.



**Tip** Running a task automatically saves the task.

1. From the configuration tree, click the VI Logger task you want to run.
2. Click the **Run task** button.
3. Let the task run for several seconds to acquire data.
4. Click the **Real Time Data** tab to view the data in a graph. Refer to the [Viewing Data during Acquisition and Logging](#) section for more information about viewing data while a task runs.

If you set a stop condition for a task, it stops acquiring and logging automatically. If you do not specify stop conditions for a task, the task runs until you manually click the **Stop task** button. Refer to the [Setting Start and Stop Conditions for Data Acquisition](#) section for more information about setting stop conditions.

5. Click the **Stop task** button.
6. Click the **Save task** button to save the current VI Logger task configuration.

## Modifying a Task

You can edit configuration settings for a VI Logger task you previously created and saved. In the configuration tree, expand **VI Logger Tasks**. Click a task name to display the tabbed VI Logger window for that task. You can edit stop and start conditions, logging conditions, or export settings using the procedures in this manual or in the *VI Logger Help*. Click the **Save task** button or run the task to save it.

## Duplicating a Task

To save time when you are configuring more than one task, you can duplicate a task and then modify its settings. Complete the following steps to duplicate a task.

1. Right-click the task in the configuration tree and select **Duplicate task** from the shortcut menu to display the **Duplicate a VI Logging task** dialog box.
2. Enter a task name in the **New task name** text box.
3. Click the **OK** button.

The duplicate task appears under **VI Logger Tasks** in the configuration tree.

## Deleting a Task and its Data

Complete the following steps to delete a VI Logger task.



**Caution** Deleting a task deletes all data associated with the task.

1. Right-click the task in the configuration tree and select **Delete task** from the shortcut menu. A dialog box confirms whether you want to delete the task.
2. Click the **Yes** button to delete the task and data.

## Setting Data Acquisition and Logging Conditions

---

You can define data acquisition and logging conditions for a VI Logger task. Acquisition begins when VI Logger acquires the data and displays data in the Real Time Data view. Logging begins when VI Logger logs the data to the destination you specify.

By default, logging begins when data acquisition begins. When you click the **Run task** button, acquisition and logging start at the same time. Acquisition and logging stop when you click the **Stop task** button or when a stop acquisition condition occurs. However, logging does not have to begin at the same time as acquisition. You can configure a VI Logger task to control datalogging manually.

### Setting Start and Stop Conditions for Data Acquisition

You can control the ways in which VI Logger starts and stops acquiring data by setting dates and times for acquisition, using a trigger to start acquisition, or using a combination of both in which the hardware searches for a trigger after a specific start time occurs. Acquisition occurs on all the channels included in a specific VI Logger task.

### Setting Date and Time Conditions

Complete the following steps to set data acquisition start and stop conditions by date and time.

1. In the **Time Condition** section of the **Task Attributes** tab, place a checkmark in the **Start at** checkbox.
2. Enter the date and time you want to start acquiring data. Click the down arrow in the **Start at** control to display a calendar you can use to select dates.
3. Place a checkmark in the **Stop at** checkbox.



4. Enter the date and time you want to stop acquiring data. Click the down arrow in the **Stop at** control to display a calendar you can use to select dates.
5. Click the **Save Task** button to verify changes to the acquisition settings.
6. Click the **Run Task** button to start acquiring data.



**Note** When you set the acquisition start and stop conditions, you still must click the **Run task** button to start the task. VI Logger waits for specified start conditions to begin acquiring data and waits for specified stop conditions to complete data acquisition.

## Setting Trigger Start Conditions

You can use a trigger to control when a VI Logger task starts acquiring data. Complete the following steps to set a trigger start condition if you are using an NI-DAQmx device.

1. In the **Acquisition Settings** section of the Task Attributes view, click the **Edit task** button. The DAQ Assistant opens and displays NI-DAQmx task settings.
2. From the **NI-DAQmx Task** window, click the **Task Triggering** tab. The trigger settings appear.
3. In the **Start** section, select the type of trigger type you want. Configure the source and other settings that appear when you select the trigger type.
4. Click the **OK** button to close the DAQ Assistant.
5. Click the **Save Task** button to verify changes to the acquisition settings.
6. Click the **Run Task** button to start acquiring data.

## Setting Start Conditions for Datalogging

You can control the ways in which VI Logger logs data by changing default settings in the Task Attributes view, using a trigger to start logging, or using channel events to control logging conditions.

Logging occurs on channels in the DAQmx Channels view that contain a checkmark in the **Log Enabled?** checkbox next to the channel name. Remove the checkmark if you do not want to include a specific channel in datalogging.

If you do not want logging to start at the same time acquisition starts, remove the checkmark from the **Begin logging when acquisition starts** checkbox in the Task Attributes view. When you run the task, click the **Start logging** and **Stop logging** buttons to control logging.

You can use a digital channel to control when logging begins. Place a checkmark in the **Control logging with digital channel** checkbox in the Task Attributes view to control logging for a task. Logging occurs while the channel is high.



**Note** Turning logging on and off does not affect the VI Logger task, but it does create additional task runs. Click the **Stop task** button if you want to end the task.

You also can use channel events to control start and stop logging conditions. This feature is available only in the Full package of VI Logger. Refer to the *VI Logger Help* for more information about using channel events for logging.

## Viewing and Printing Data

---

You can view data in VI Logger while VI Logger acquires and logs the data or after a task run is complete.

### Viewing Data during Acquisition and Logging

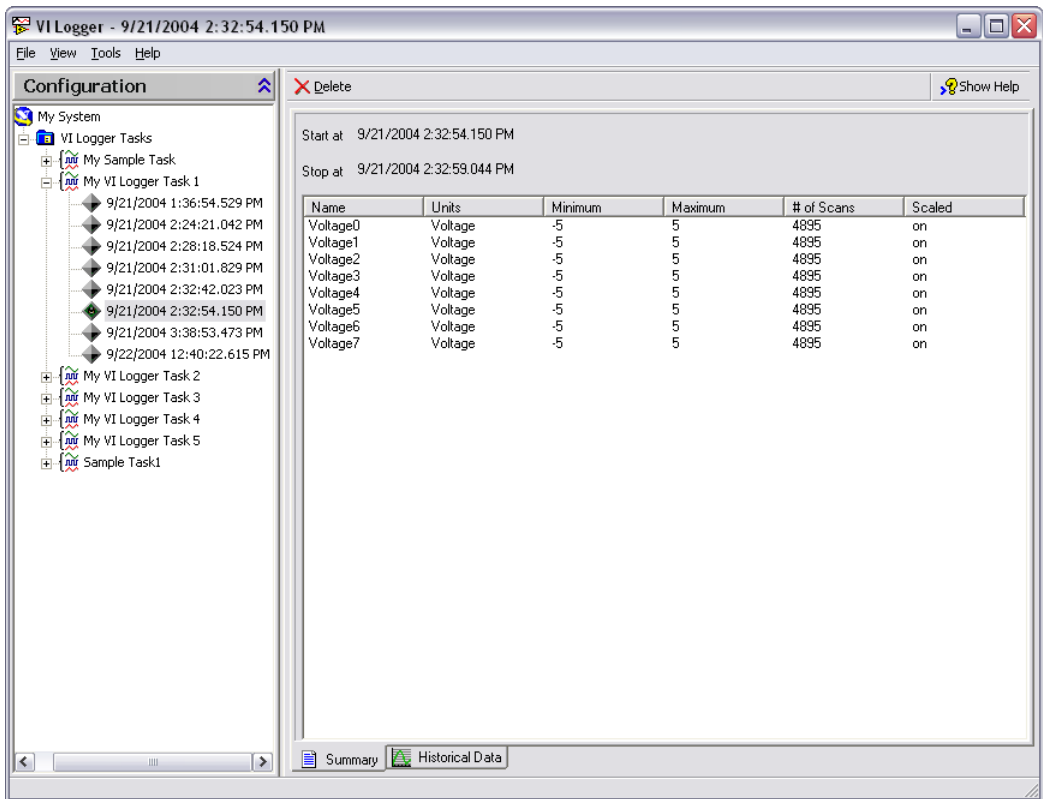
Use the Real Time Data view to view data graphically while you run a task. The Real Time Data view monitors data during acquisition, regardless of whether datalogging occurs. VI Logger automatically displays this view when logging begins. For high-speed datalogging, remove the checkmark from the **Jump to the Real Time Data view when task starts** checkbox in the Task Attributes view. This releases CPU time to use for logging, which improves logging performance.

### Viewing Data from Previous Task Runs

You can view summary data from previous VI Logger task runs in a table, or view the full results in a graph. You can view information related to a specific run, such as the start and stop time, engineering units measured, minimum and maximum value set for the channel after scaling, and number of scans.

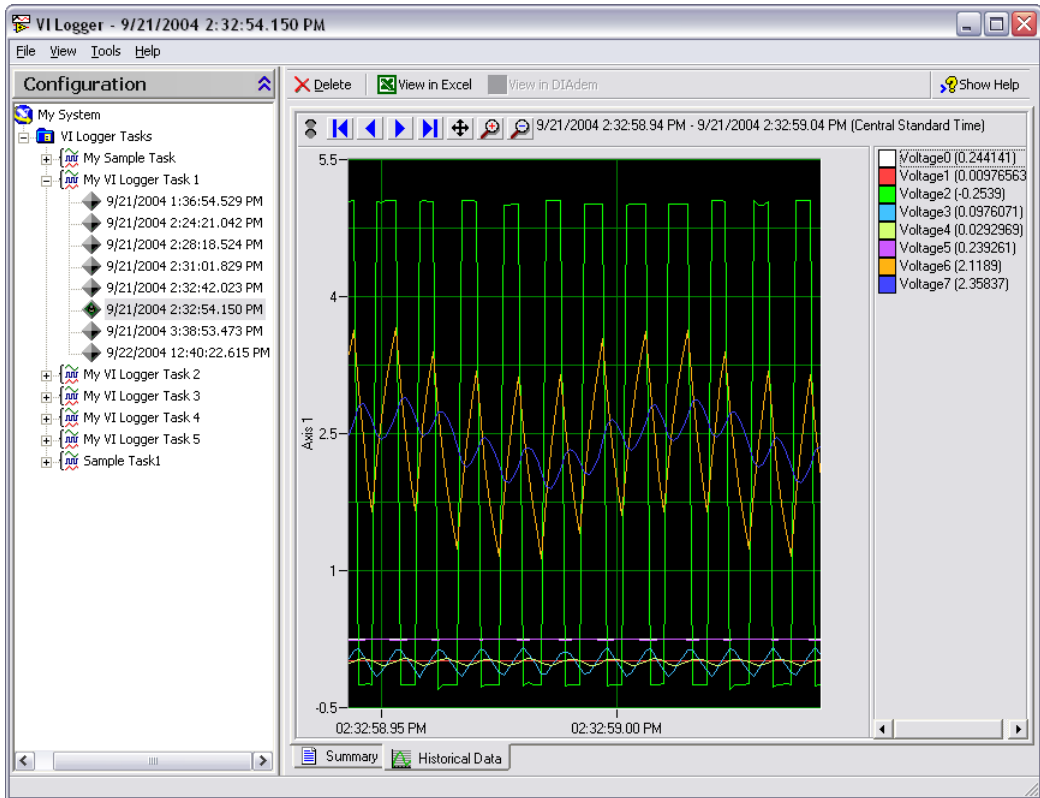
Complete the following steps to view logged data from a specific VI Logger task run.

1. In the configuration tree under **VI Logger Tasks**, click a task name to expand a list of data runs, named by the date and time of the run.
2. Click the run you want to view.
3. Click the **Summary** tab to display the Summary view, shown in the following example.



You can use the Summary view to see the following information about the VI Logger task run:

- **Name**—The name of the channel from which datalogging occurred.
  - **Units**—The engineering units of measure used in the run, such as voltage.
  - **Minimum**—The minimum value set for that channel after scaling.
  - **Maximum**—The maximum value set for that channel after scaling.
  - **# of Scans**—The number of scans VI Logger logged for the channel during the run.
  - **Scaled**—Whether datalogging in the run was scaled or binary. NI-DAQmx data is always logged as scaled.
4. Click the **Historical Data** tab to display the Historical Data view, which contains a graph of the data from the task run, shown in the following example.



## Viewing Data in VI Logger Graphs

A red and green LED indicator appears on the upper left corner of the Historical Data and the Real Time Data views while a task runs. The green light indicates that the graph is displaying data that VI Logger is acquiring while the task runs. The red light indicates that the graph is displaying data that VI Logger already acquired, such as the beginning or end of logged data.



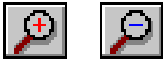
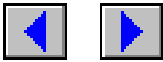
- Use the LED indicator, shown at left, to switch from viewing real-time data to viewing historical data. Click the red light at the top of the indicator to take a snapshot of data to view. Click the green light to return to viewing real-time data. You can switch between data views only when a task is running.



- Click the home arrow button, shown at left, to view the beginning of logged data.



- Click the end arrow button, shown at left, to view the end of the logged data.



- Click the scroll arrows, shown at left, to scroll through the logged data. To scroll faster through the data, click a scroll arrow button and drag the cursor right or left while holding the mouse button. The further away you drag the cursor from the arrow, the faster the data scrolls.
- Click the magnifying glasses at the top of the display view to zoom in or zoom out on the current view. The view magnifies twice or decreases by half on the x-axis.

You also can click and drag the display view to the right or left to magnify data. Right-click the view, select **Zoom/Pan Mode** and the specific axis on which you want to zoom from the shortcut menu. Click the view and drag a square around the area you want to magnify. Use the magnifying glass to zoom out again.

You can modify the appearance of the graphs and graph cursors. Refer to the *VI Logger Help* for more information about modifying the graph display.

## Viewing Data in Other Applications

You can view data from a VI Logger task run in a text file, Microsoft Excel, a Web browser, or DIAdem.

Before you run a task, place a checkmark in the **View in Excel when task stops** checkbox in the Task Attributes view if you want VI Logger to display the data in Microsoft Excel. You also can click the **View in Excel** button that appears in the Real Time Data and Historical Data views after the task runs. Microsoft Excel opens to display the data in a table. If you do not have Microsoft Excel installed, the default text editor displays the data. You can view up to 65,535 scans of data in Microsoft Excel.

If you have DIAdem installed, you can view data in DIAdem after the task runs. Before you run a task, place a checkmark in the **View in DIAdem when task stops** checkbox in the Task Attributes view. You also can click the **View in DIAdem** button that appears in the Real Time Data and Historical Data views after the task runs.

Complete the following steps to export data to a text or HTML file.

1. From the configuration tree, right-click a VI Logger task run and select **Export Data** from the shortcut menu to display the **Export data** dialog box.
2. Enter the start time and stop time of the data points you want to export. The default values in the **Start time** and **Stop time** controls include the entire VI Logger task run.
3. Enter the location of the output file or click the **Browse** button to navigate to an existing file. You also can specify a different filename.

4. Select the type of delimiter you want to organize the data in the file. For example, you can separate data with a tab or with a comma.
5. Select the contents of the text file. You can include data, data and events, or information you specify in a custom text or HTML template. If you select **Custom template**, click the **Customize template** button to display the **Advanced** export settings dialog box. Refer to the *VI Logger Help* for more information about customizing templates.
6. If you want to export data to an HTML file, click the **Load** button in the **Advanced export settings** dialog box, navigate to the `html.vet` file in the `VI Logger/Export` directory, and select the file. Click the **OK** button to close the **Advanced export settings** dialog box.
7. Click the **OK** button. The dialog box closes. The **Exporting text data** dialog box displays the status of the data export.
8. Click the **Close** button to close the **Exporting text data dialog box**.

## Printing Data

To print a VI Logger graph, right-click the graph in the Historical Data or Real Time Data view and select **Print** from the shortcut menu. You can print only what appears in the VI Logger window.

## Using LabVIEW with VI Logger

---

You can use the VI Logger VIs in LabVIEW 7.1 or later to control tasks programmatically, which gives you greater control over running tasks. You can run tasks, read data and obtain status information from tasks that are running, set multiple start and stop sequences for a task, and perform other VI Logger operations.

Use the LabVIEW Example Finder to browse the VI Logger example VIs. The example VIs, located in the `Examples\VI Logger\Logging Examples.llb` directory, contain common solutions for data acquisition and logging using the VI Logger VIs.

Refer to the *LabVIEW Help* for more information about specific VI Logger VIs.

## Generating Example VIs from VI Logger Tasks

You can generate an example VI in LabVIEW from a VI Logger task. LabVIEW provides a number of options for analyzing and processing data from a VI Logger task run.



**Note** You must have LabVIEW 7.1 or later to run a VI generated from a VI Logger task in LabVIEW.

Complete the following steps to generate an example VI.

1. From the configuration tree, click the VI Logger task you want to use.
2. Select **Tools»VI Logger»Generate example VI in LabVIEW**.  
VI Logger creates a VI with the same name as the VI Logger task you selected. LabVIEW opens and displays the front panel of the new VI.
3. From the front panel, click the **Run** button. The VI acquires and logs data in the same way as the VI Logger task.

Refer to the *LabVIEW Help* for more information about performing specific operations in LabVIEW.

## Purchasing the Full Package of VI Logger

---

The Full package of VI Logger contains additional features that are not available in the Lite package. The following table compares the features in the Lite package and the Full package.

Feature	Lite Package	Full Package
NI-DAQmx support	X	X
Traditional NI-DAQ support		X
FieldPoint support		X
Viewing real time and historical data in graphs	X	X
Viewing data in Microsoft Excel	X	X
Viewing data in DIAdem	X	X
Exporting data to text or HTML files	X	X
Using calculated channels		X
Using events		X
Managing databases		X
Publishing data to remote computers		X
Specifying a database to save data for a particular VI Logger task		X

Refer to the *VI Logger Help* for more information about specific features available in the Full package of VI Logger. If you are using VI Logger Lite, you must purchase and activate the Full package to use these features. Refer to the VI Logger Web page at [ni.com/vilogger](http://ni.com/vilogger) for more information about purchasing the Full package.

You can purchase and activate the Full package from VI Logger Lite. Select **Tools»VI Logger»Activate All VI Logger 2.0 Features** to display the **Activate All VI Logger 2.0 Features** dialog box.

Click the **Purchase License** button to display a Web page on [ni.com](http://ni.com) where you can purchase the software license.

Click the **Activate License** button to activate the software. You must have a valid serial number to activate the Full package of VI Logger. The NI Activation Wizard guides you through the process of entering the serial number, obtaining and entering an activation code, and enabling the software.

## Where to Go from Here

---

The *VI Logger Help* includes procedures for using VI Logger Lite and VI Logger 2.0. Access the *VI Logger Help* by selecting **Help»VI Logger Help**.

From VI Logger or MAX, click the **Show Help** button to display task-based help on the right side of the VI Logger window. To display help on a particular control or indicator in the VI Logger window, right-click the object and select **What's This?** from the shortcut menu.

The *LabVIEW Help* includes reference help for using VI Logger VIs. Access the *LabVIEW Help* by selecting **Help»VI, Function, & How-To Help**.

Visit the VI Logger page of the NI Web site at [ni.com/vilogger](http://ni.com/vilogger) for information about updates and support.

National Instruments, NI, ni.com, and LabVIEW are trademarks of National Instruments Corporation. Refer to the *Terms of Use* section on [ni.com/legal](http://ni.com/legal) for more information about National Instruments trademarks. Other product and company names mentioned herein are trademarks or trade names of their respective companies. For patents covering National Instruments products, refer to the appropriate location: **Help»Patents** in your software, the `patents.txt` file on your CD, or [ni.com/patents](http://ni.com/patents). For a listing of the copyrights, conditions, and disclaimers regarding components used in USI (Xerces C++, ICU, and HDF5), refer to the `USICopyrights.chm`. In regards to components that use Citadel 5, the following copyright applies. Copyright © 1994 Hewlett-Packard Company. Refer to the *VI Logger Help* for a listing of the conditions and disclaimers.